



PRESS PACK

Dub Engine – The Science of Dub – Immersive 2.0

Live performance + workshop • Rich Mix, London • March 2026



Dub Engine – The Science of Dub – Immersive 2.0

A 360° live dub experience where the mix becomes the performance.

Dub Engine – The Science of Dub – Immersive 2.0 develops dub as a live, immersive performance practice — expanding the tradition of hands-on mixing into a multi-speaker environment where sound becomes physical, directional and responsive.

Artistically, the project is grounded in dub fundamentals — bass pressure, echo, drop-outs, delay throws, reverb tails, tension and release — presented as a contemporary immersive experience where the room itself becomes part of the instrument.

Led by Tony Tea and featuring Greg Hunter (Dubsahara), the show moves between full band sections and minimal dub-focused moments, using live musicians and dub stems to keep the set open, reactive and driven by feel rather than rigid sequencing.

Alongside the performance, an artist-led workshop shares the creative process behind immersive dub: how decisions in the mix change when sound can move through space, and how immersive systems can support culture and craft rather than replace them.

The night culminates with a special guest — a legendary dub architect — returning to the controls (announcement from 2 February 2026).

Key points

- Immersive, multi-speaker dub performance + daytime workshop
- Live mix performance in real time (echo, drop-outs, pressure, space)
- Featuring Greg Hunter (Dubsahara) + special guest (TBA)
- Designed to stay open, reactive and driven by feel — not rigid sequencing



Dub Engine
IMMERSIVE 2.0

Immersive Dub – Centre Stage (In-the-Round)

Date: 12 March 2026

Schedule: From 1:00pm – setup, rigging, system build & rehearsal

Location: Rich Mix, London

This project is a live immersive dub performance presented with a centre-stage, in-the-round setup. The stage is positioned in the middle of the room, similar to a boxing ring, allowing the audience to stand and move around all sides of the performance area. There is no traditional front-of-stage.

Centre Stage Layout

	Audience	Audience	Audience	
Audience		Keyboard / Guitar		Audience
Audience	Bass	Drums	Scientist	Audience
Audience		Greg Hunter	Tony T (Immersive Mix)	Audience
	Audience	Audience	Audience	

Performance Notes

- Musicians and artists share the centre stage as one performance unit.
- Scientist performs live dub mixing on stage as part of the performance.
- Greg Hunter performs both with the band and directly with Scientist.
- Tony T controls the immersive spatial mix live from the centre stage.
- The structure allows fluid movement between full band sections, dub-focused moments, and spacious passages.

Immersive Sound (Artist & Tech Overview)

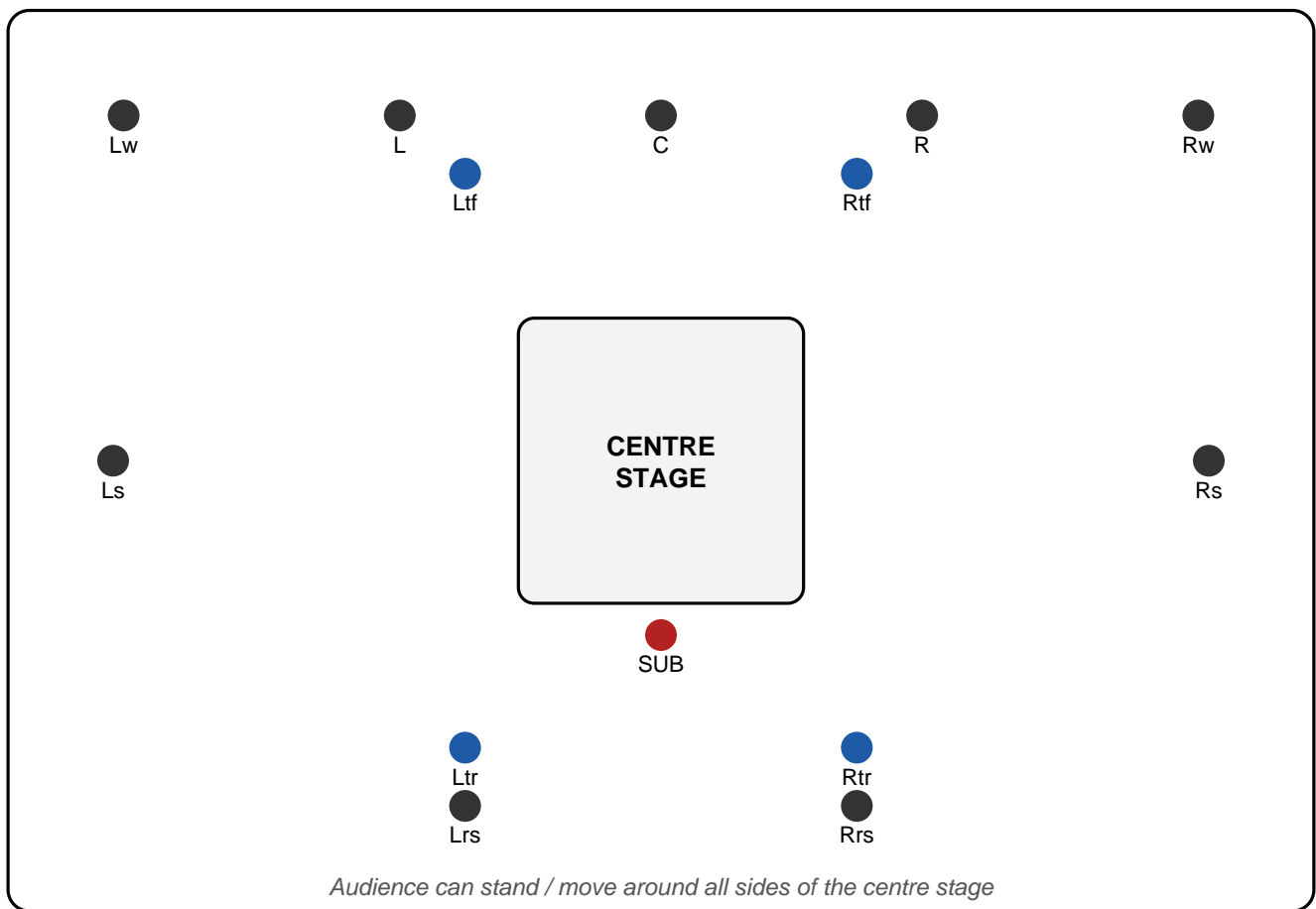
Sound is delivered through a multi-speaker immersive system placed around and above the audience. Dub effects such as delay, reverb, and drop-outs can move through the room in real time. The immersive system supports the performance and responds musically to what happens on stage.



Immersive Dub – Speaker Layout (In-the-Round)

Simple reference layout for centre-stage performance (bed + heights + sub).

ROOM / AUDIENCE AREA



Legend

● Bed speakers (around the room)

● Height speakers (overhead)

● Sub / L



Tony Tea

Artist / Producer • Dub Engine – The Science of Dub – Immersive 2.0

Tony Tea is a London-based artist, producer and immersive-audio specialist working at the intersection of sound-system culture, live performance and spatial sound. With over 30 years in the creative industries, he began as a performing jazz double bassist — building a deep relationship with groove, dynamics and live interplay — before moving into audio engineering, sound design and public-facing arts projects.

As founder of Dub Engine, Tony develops dub as a hands-on, live mixing practice — extending the tradition of echo, drop-outs and bass pressure into immersive multi-speaker environments where the room becomes part of the instrument. His work combines artist-led performance with practical workshop formats that share process and craft in an accessible way.

Alongside music and production, Tony has delivered major community-facing commissions including The Portobello Wall (Royal Borough of Kensington & Chelsea), and continues to collaborate with artists, venues and partners to create inclusive, high-impact experiences that connect audiences through sound, culture and story.

Greg Hunter (Dubsahara)

Press / Programme Bio



Photo: Greg Hunter (archive)



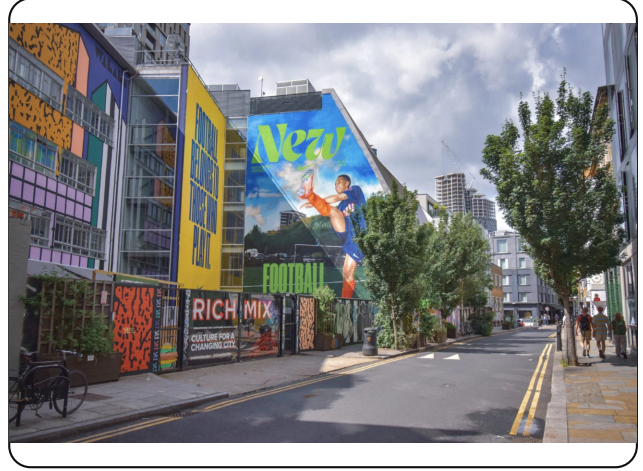
Artwork: Dubsahara – Geonosis

Greg Hunter (Dubsahara) is a West London–raised producer, sound engineer and composer whose work extends classic dub technique into ambient and psychedelic sound design. Born in 1965, he began making music at 19, and by 22 was working in recording studios as a tape assistant — learning the craft from the ground up. While engineering at Steve Levine’s studio, he met The Orb and went on to work with them for several years, bringing a studio-as-instrument approach where echo, texture, drop-outs and bass pressure are treated as lead elements.

Under the Dubsahara name, Hunter has built a deep catalogue including *Geonosis* (a collection of sonic experiments recorded 2000–2012), alongside later long-form works such as *Infrasonic Therapy*, described as drones and tones for healing and meditation. He’s also associated with *Dub Trees* via collaborations with producer Youth — linking sound-system heritage to forward-leaning electronic production.

RICH MIX

Why Rich Mix



Rich Mix is East London's home for culture and creativity — a place that welcomes adventurous, diverse audiences and programmes everything from music and live performance to talks and workshops.

It's the right setting for *Dub Engine – The Science of Dub – Immersive 2.0*, because the building supports events that feel close, communal and alive, while still being run with proper venue experience and support.

Being right in the heart of East London (Bethnal Green Road), Rich Mix is easy for audiences to reach, and it's also genuinely accessible — step-free entry, lifts throughout, and hearing loops in key spaces — which matters for an event that's about a shared experience in the room.



Certain Blacks

Arts development • Festivals • Live performance



Certain Blacks is an East London–rooted arts development organisation that supports diverse artists and produces bold work across performance, live art, music and theatre. Led by Artistic Director Clive Lyttle, the organisation connects artists, venues and partners to create opportunities for new, emerging and established voices — with a focus on quality, access and audience experience.

This spring, Certain Blacks launches Black Athena Festival — a new programme across Rich Mix (March) and The Place (April) bringing together cross-disciplinary work in dance, theatre, music and live art, from artists pushing beyond dominant stories and conventional forms.

As part of the festival programme, Certain Blacks is presenting Dub Engine – The Science of Dub – Immersive 2.0 at Rich Mix: a live immersive dub performance and workshop that brings sound-system culture into a 360° listening environment — centred on craft, live mixing and the shared energy of the room.